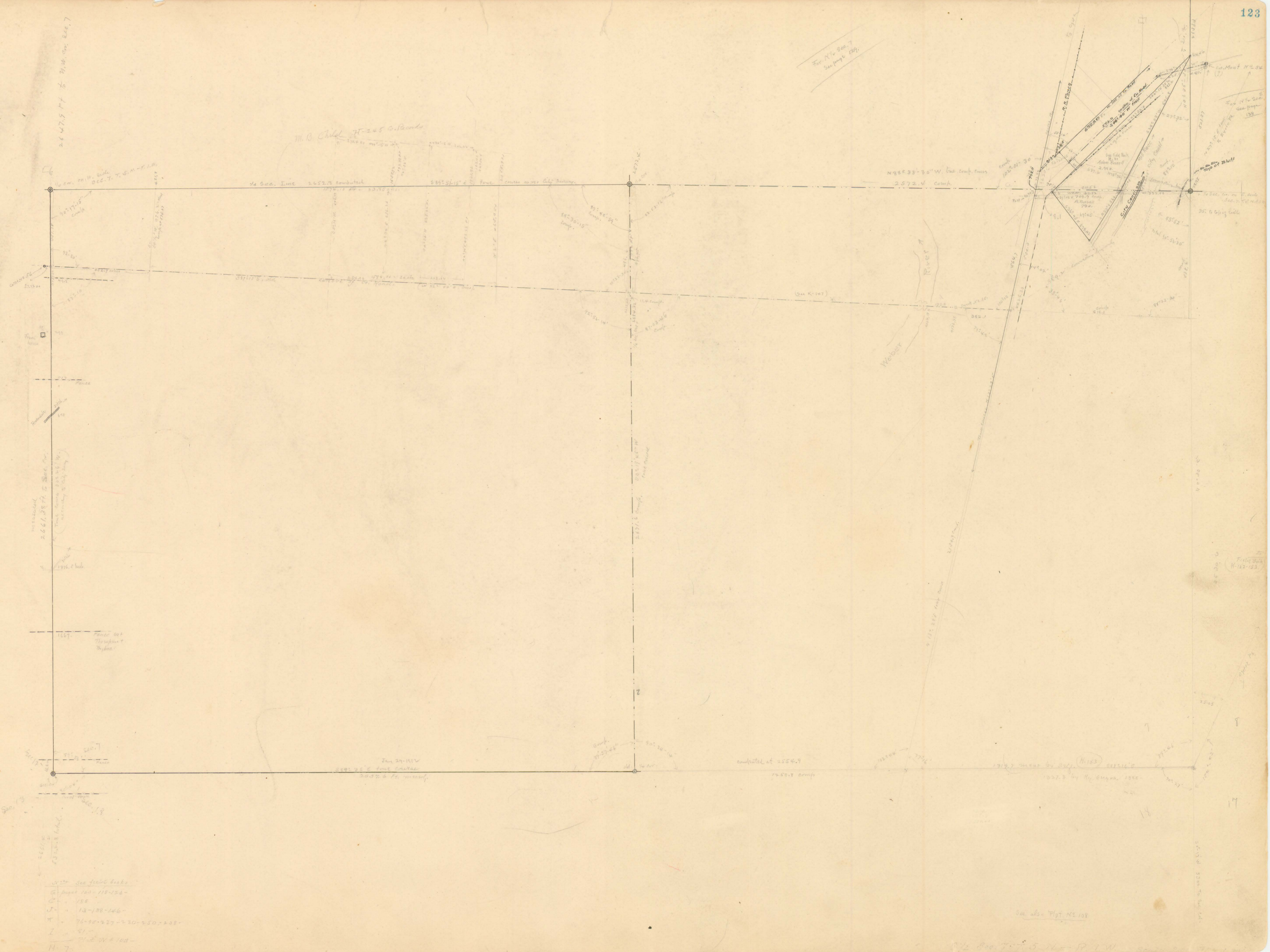


2647.5 ft to NW cor Sec. 7

M. B. Child 71-245 G. Records

For N 1/4 Sec. 7
Sample 129



1/4 cor. NW cor Sec. 7
D.C.T. T. S.M.-R.I.W.

1/4 Sec. Line 2652.9 computed

S 84° 21' 18" E fence corner as per City Survey

N 88° 33' 30" W. base camp runs
2572.4 Comp.

2661.8 ft to Sec. 7

Fence out
throughout
to fence

Jan 24-1914
S 88° 25' E line correct
2652.9 ft. computed

computed at 2554.9
72.50 ft camp

1912 fence by 2571.2
1927.3 by M. Child, 1928

- 1 - see field books
- 2 - August 1900-118-126-
- 3 - 188
- 4 - 12-188-146-
- 5 - 91-92-127-230-250-262-
- 6 - 47-
- 7 - 11-2 W 100-
- 8 - 7-

see also Plat NE 128

1/4 Sec. 7, T. 5 N., R. 1 W.